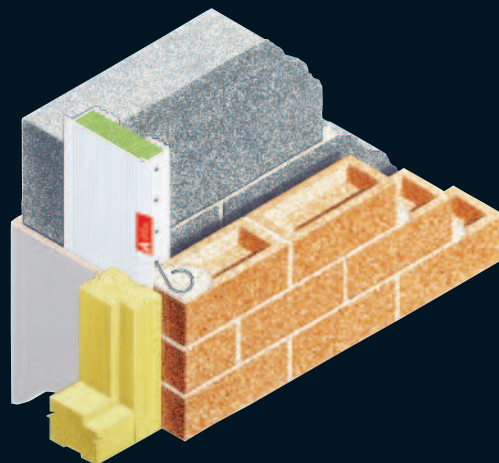


# Cavi60

## Type WCA Cavicloser

- 60 minutes fire integrity rated stops
- Acts as a DPC
- Accompanying stainless steel anchoring ties
- For cavity widths up to 150mm
- Micro fins



### REQUIREMENT

To close a reveal where a one hour fire rating is required in addition to the closing, thermal and dpc qualities.

### SOLUTION

With a one hour fire rating and a maximum cavity width accommodated of 150mm, the Cavi 60 Type WCA provides a robust method of closing and protecting wider reveals. The large sound-absorbing insulation core is secured behind the heavy duty ribbed face which permits an unrestricted choice of frame positions within thermally efficient parameters.

### REFERENCES

- BS 476 (fire resistance testing)
- Part E details – resistance to the passage of sound
- Building Regulations Document C L1 & L2
- Scottish Tech Standards Part D
- Robust Details
- PD6697:2010
- BRE Thermal Insulation Avoiding Risks
- BS EN ISO 10211: Thermal bridges in building construction

### SPECIFICATION WORDING

Cavi 60 Type WCA Cavicloser by Cavity Trays of Yeovil Somerset BA22 8HU (01935 474769) to close cavity wall reveal and provide one hour fire integrity rating. State actual cavity width.

#### PRODUCT NAME - GROUP

Cavi 60 Type WCA Cavicloser

#### EXPOSURE RATING

30+mm setback. Severe Very severe when checked

#### CAVITY - STANDARD SIZES ACCOMMODATED

From 100mm up to 150mm

#### SPECIAL CAVITY WIDTHS ACCOMMODATED

Yes bespoke closer service offered

#### STRAIGHT REVEALS

Yes – build in profile as supplied

#### CHECKED REVEALS

Yes – build in as checked illustration

#### PRODUCT LENGTHS

2.1m, 3.0m

#### ACTS AS VERTICAL DPC

Yes

#### ACTS AS INSULATOR

Yes

#### PERMITS DIFFERENT FRAME POSITIONS

Yes

#### FRAMES FITTED AS WORK PROCEEDS OR LATER

Yes - first or second fix options

#### TRADITIONAL CONSTRUCTION

Fire rated closers tested in a cavity wall consisting of two masonry skins

#### MASONRY SKIN STYLES

All popular flat faced masonry

#### UNDULATING MASONRY FACE FINISHES

Seek advice providing details of material

#### ACOUSTIC INSULATOR

Yes – insulation promotes reduction

#### FIRE RATED

Yes Prefix denotes 60 mins (1 hr) fire rating

#### VERTICAL AND HORIZONTAL APPLICATIONS

Yes – see examples

#### COMPATIBLE WITH OTHER CAVITY WALL ELEMENTS

No known restrictions

#### SECURING TIES SUPPLIED

Yes

#### PACK SIZES

x 6 lengths

#### WEIGHT PER PACK

2.1m x 6 = 20kg. 3m x 6 = 28.5kg.

#### MATERIAL

PVCU + rock wool insulator + stainless ties

#### COLOUR

White

#### BUILDING REGULATIONS

Yes regulations can be satisfied

#### NHBC

Yes requirements can be satisfied

#### 'K' VALUE OF INSULATION USED

0.035W/mK

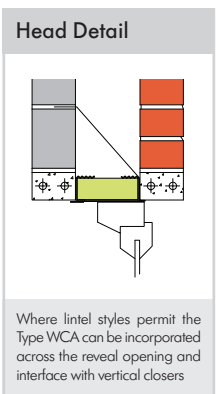
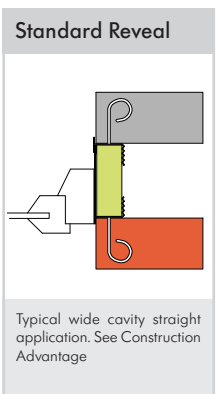
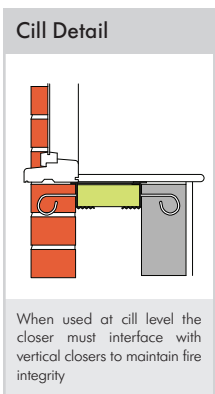
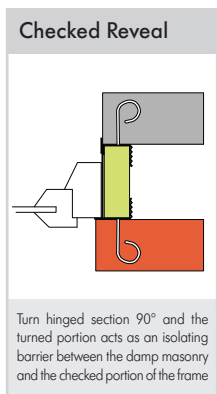
#### CFC FREE

Yes + zero ODP

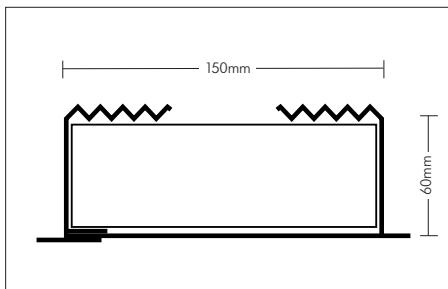
#### CAD DRAWING

DOWNLOADS AVAILABLE

Yes



COMPUTER REFERENCE CODES:  
CAVI 60 WCA 2.1 100      CAVI 60 WCA 3.0 100  
CAVI 60 WCA 2.1 150      CAVI 60 WCA 3.0 100



### DESIGNERS' COMMENTS

The fins moulded into the face plate comply with the requirements of Part C (page 37 . 5.32) and promote transient water drainage between the anti-capillary peaks.

Fire rated closers tested in a cavity wall consisting of two masonry skins. Where use is proposed where one skin is not of masonry, it is the users responsibility to ensure the proposed construction provides a level of stability, integration, performance and fire resistance and the resultant detail is fit for purpose and will perform to the standard created and determined by the user.

